

Invitation to Bid No.: 96371109 (108) EB16/2565

Specification No.: R-1059/2546

C3 Schedule of detailed requirement

Item	PEA Material No.	Quantity	Description
1	-	sets	Insulator assembly, consisting of :
	03010204		1.1 <u>1 pc.</u> Insulator, line post type, for 115 kV transmission line of double conductor type, horizontal mounting, according to ANSI C29 (porcelain); complete with long stud and hardware. Similar to : - NGK Drawing No. T28806 A and Cat.No. OM-112186 HU, or - equivalent
	02570106 (1-02-067-0106) 480b		1.2 <u>2 pcs.</u> Clamp, top type, for line post type insulator in 1.1. Similar to : - NGK Cat. No. 1H-1093 CU, or - equivalent

Invitation to Bid No.: 90391411. (AT) EB 16/2565<sup>-2-</sup>  
 Specification No.: R-1059/2546

Manufacturer :  
 Trade-mark :  
 Country of origin :  
 Bidder :  
 Bid No. :  
 Date :

C4 Price schedule

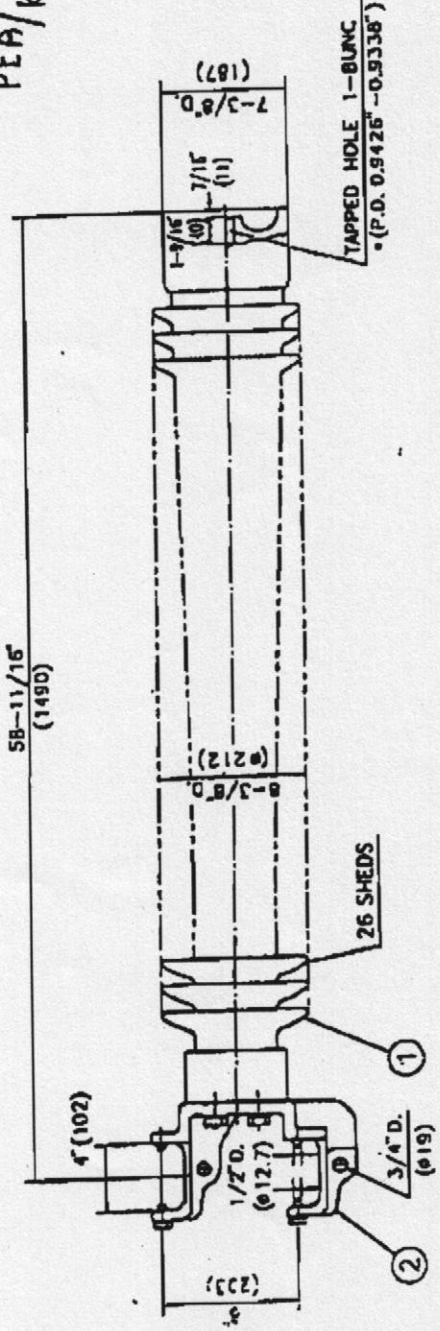
Item	PEA Material No.	Catalogue No.	Description	Quantity	Unit Cost (See details & conditions attached)	Total Cost (See details & conditions attached)
1	-		Insulator assembly, consisting of: 1.1 1 pc. Insulator, line post type, for 115 kV transmission line of double conductor type, horizontal mounting, according to ANSI C29 (porcelain); complete with long stud and hardware.	sets		
	03010204			A B b		
	02570106		1.2 2 pcs. Clamp, top type, for line post type insulator in 1.1.			
	(1-02-057-0106)					
						II



DRG.NO. T2BB06A

PEA/ก. สจวนกนอ.

SB-11/16'  
(1490)



TECHNICAL DATA

Specification applied: ANSI C29.7-1983

CHARACTERISTICS

	RATING
1. Dimension	
a. Leaking distance, in. (mm)	115 (2,920)
b. Dry arcing distance, in. (mm)	46-1/2 (1,180)
2. Mechanical values	
a. Compressive strength, lb. (kg)	1,500 ( 680)
b. Tensile strength, lb. (kg)	5,000 (2,270)
3. Flashover voltages	
a. Low-frequency dry, kV	435
b. Low-frequency wet, kV	390
c. Critical-impulse, positive, kV	693
d. Critical-impulse, negative, kV	900
4. Withstand test voltages	
a. Low-frequency dry, kV	350
b. Low-frequency wet, kV	315
c. Impulse, kV	550
5. Regen-influenced voltage delta	
a. Low-frequency test voltage, kV	73
b. Maximum for at 1,000Hz, microsec	200

Note: 1) Tapped holes threaded outside to accommodate hot-dip galvanized cap screws.  
 2) Verification of dimension, except otherwise specified, and sized according to KC Pub. 383-1983  
 3) Mark on porcelain: NGK Japan Year

UNIFORM PART COATING ON PORCELAIN AND METAL SURFACES IN CONTACT WITH CERAMIC  
 PORCELAIN: BROWN ANTI-SPARK-GLOSS GLAZED  
 FERROUS PARTS: HOT DIP GALVANIZED EXCEPT FEMALE THREAD AND STAINLESS STEEL

ITEM	DESCRIPTION	MAIN MATERIAL	RECD.	CAT. NO.
1	LINE POST INSULATOR	PORCELAIN	1	DA-B5204W
2	CLAMP BRACKET	DUCTILE IRON	1	OM-363176



HORIZONTAL MOUNTING CLAMP TOP SOLID CORE LINE POST INSULATOR

SCALE	OFF	DRW. BY	DRM/10/10/10
UNIT	INCH (M.M.)	CHECKED BY	CKD/KAWAYAMA
DATE	MAR.16.1997	APPROVED BY	ABED/10/10/10

CAT.NO. BA-69504A

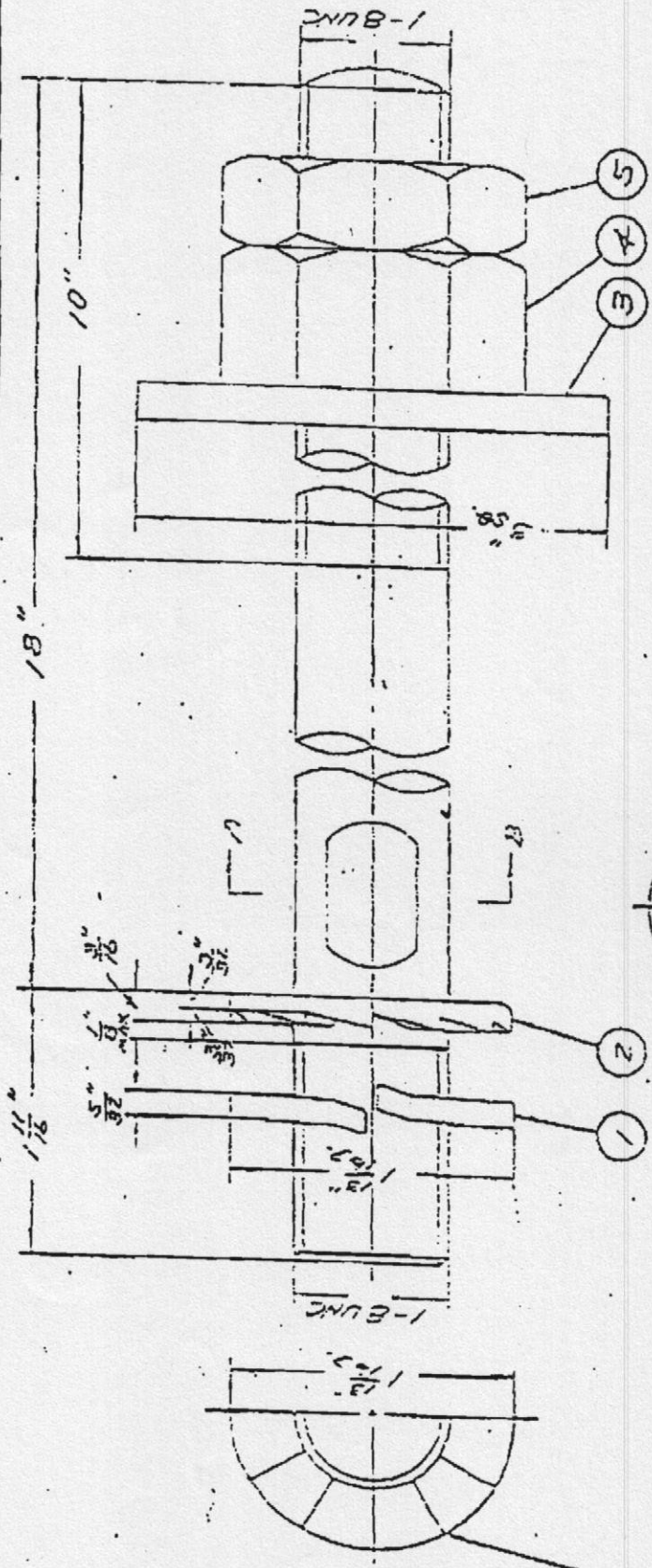
THIS DRG. SUFFICIENT FOR OLD DRG. NO. T2BB06. DATED MAR.20,1995

CHANGES





DRG. NO. 176109



NUMBER OF NUTS: 12

FOR USE BY THE  
 APPROVED BY  
 Signature  
 Remarks

ITEM	MATERIAL	REQR.	REMARKS
⑤	STEEL	1	
④	STEEL	1	
③	STEEL	1	
②	HIGH TENSION STEEL	1	
①	STEEL	1	

SECTION A-B

**NGIK** NGIK INSULATORS, LTD.  
 AIZU, JAPAN

LONG STUD FOR LINE  
 POST INSULATORS

SCALE	UNIT	DATE	DESIGNED BY	CHECKED BY	APPROVED BY
1/1	INCH	FEB. 17, 1975			

CAT. NO. 0M-112186HU

POSSIBLE TO ORDER WITH GALVANIZED OR  
 SURFACE MARKED WITH HIGH ZINC  
 COATING PARTS NOT IN GALVA-  
 NIZED EXCEPT FEMALE THREAD.

GRANGES